



Save a mop!

Team members

Johanna Kümmerer

Valentina Lleshi

What component could overcome the mop usage?

- Washing with boiling water
- Usage of chemicals for washing the mop
- Dirty and wet conditions through cleaning process

How can we add something cheap to the mop?

- Low costs for adding it to each(!) mop
- Little producing costs
- High and easy availability
- No additional innovation cost

Our idea:

- Printing on textiles and sew it on the mop
- Advantages:
 - every mop already has a label (code could be added there)*
 - Easy process and cheap*
- But: there could be worse readability after a time
- Caused by:
 - The washing process*



Our improved idea:

- embroidering on textiles and sew it on the mop

- Advantages:

100% waterproof and resistant to chemicals

Long lifetime of the labels

- But: it could be too expensive

- This can be overcome by:

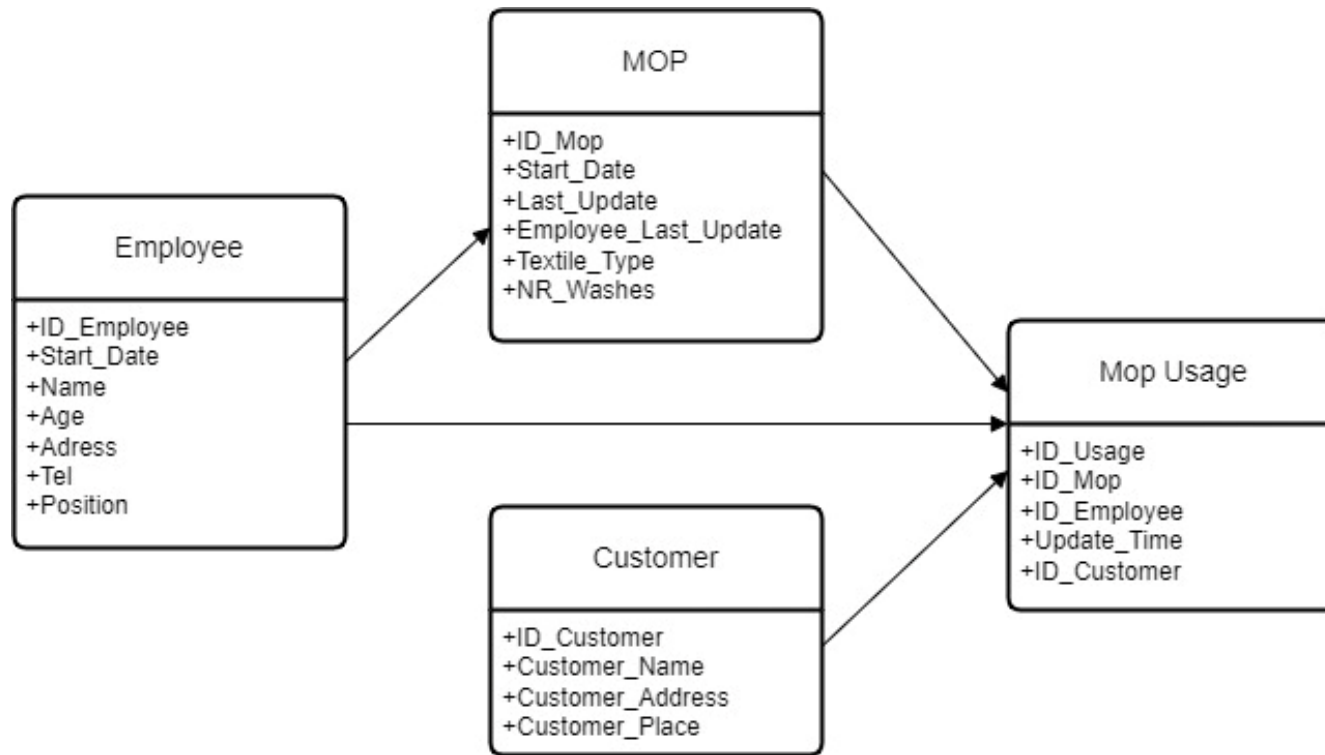
A reusage of the label by adding it to a new mop, when the old one is thrown away



Association from mop to staff

- Scan of a mop to a certain employee (realized by personal boxes)
- Saving the association in a Database
- Second scan -> after the washing process of the mop
- Directly associated with a new Box/employee (less scan actions/ time)

- As a condition we must assume, that there are little mops, getting lost during the washing process.



*What data
do we
want to
store?*

Approaches for the Website

- Intuitively (reduces training cost for employees)
- Fast processing (a lot of mops have to be scanned)
- Little options for employees (reducing problems)
- Report option for reporting manager
- Connection to already existing Employee Database if possible